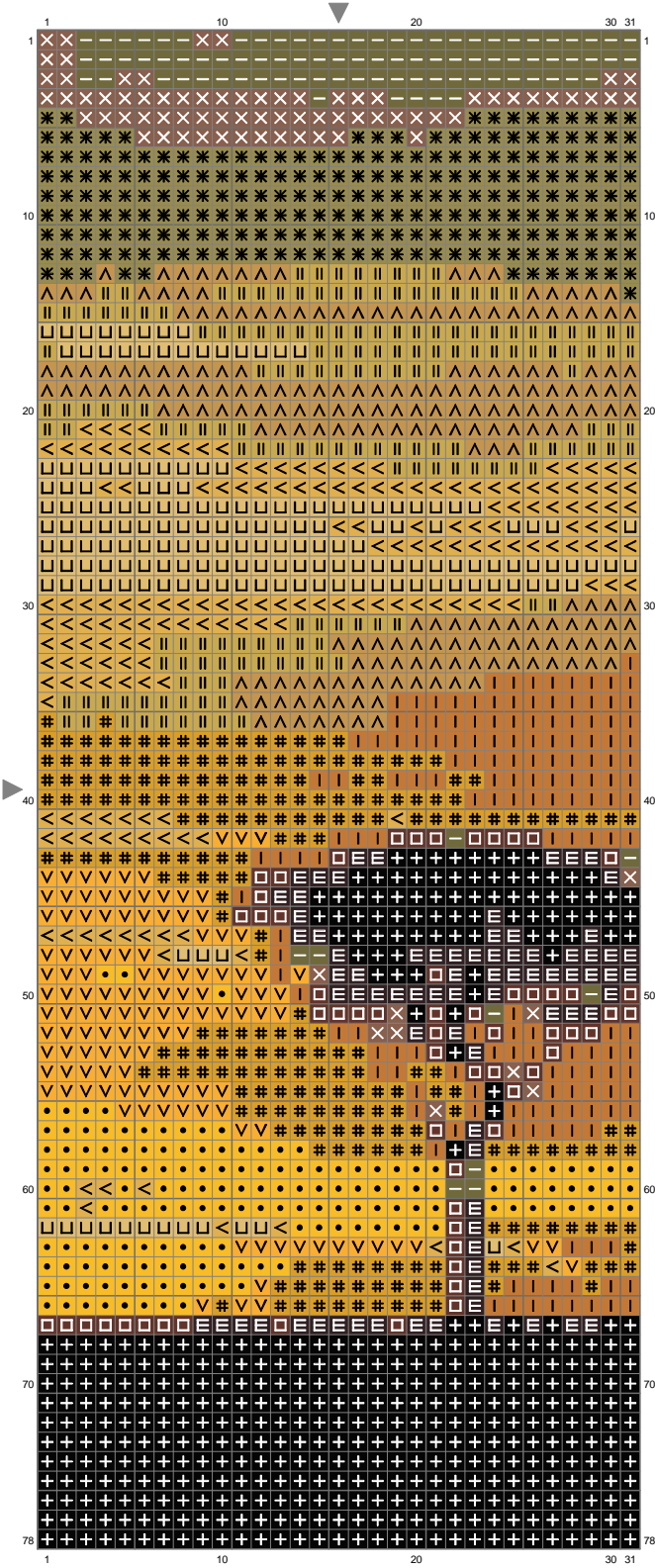


tree, [www.embroidery.kk-group.ru](http://www.embroidery.kk-group.ru)





(This chart is printed using KG-Chart LE for Cross Stitch.)

Stitch Count:31w x 78h

Cloth:Aida Cloth's Color:White

Finished Size:9.84 cm x 24.76 cm

(16 ct./inch)

Total 14 Colors

Color Table (DMC)

**Cross Stitch**

	310	(429 ct)
	610	(79 ct)
	742	(126 ct)
	782	(165 ct)
	832	(175 ct)
	938	(60 ct)
	939	(79 ct)
	972	(164 ct)
	3011	(95 ct)
	3012	(229 ct)
	3820	(180 ct)
	3821	(173 ct)
	3828	(217 ct)
	3852	(247 ct)